

**PS-3515/3516/3615/3616
Fanless Touch Terminal
User Manual**



PS-3515



PS-3615



PS-3516



PS-3616

Package Contents

- ✓ Fanless LCD touch terminal.....(x1)
- ✓ Power adaptor.....(x1)
- ✓ Power cord.....(x1)
- ✓ User Manual.....(x1)
- ✓ Recovery DVD.....(x1)
(for pre-loaded OS model only)

※ The appearance of the product may be somewhat different from that of the actual product, so the appearance of this product should be based on that of physical products. The contents in this manual may be updated at any time without prior notice.

SOME IMPORTANT NOTES

FCC NOTES

This equipment has been tested and found to comply with the limits for a Class A digital device, pursuant to part 15 of the FCC Rules. These limits are designed to provide reasonable protection against harmful interference when the equipment is operated in a commercial environment. This equipment generates, uses, and can radiate radio frequency energy and, if not installed and used in accordance with the instruction manual, may cause harmful interference to radio communications.

Operation of this equipment in a residential area is likely to cause harmful interference in which case the user will be required to correct the interference at his own expense.

This device complies with part 15 of the FCC Rules. Operation is subject to the following two conditions: (1) This device may not cause harmful interference, and (2) this device must accept any interference received, including interference that may cause undesired operation.

CE CLASS A WARNING

This equipment is compliant with Class A of CISPR 32. In a residential environment this equipment may cause radio interference.

AVERTISSEMENT CE CLASSE A

Cet équipement est conforme à la classe A de CISPR 32. Dans un environnement résidentiel, cet équipement peut provoquer des interférences radio.

WARRANTY LIMITS

Warranty will terminate automatically when the machine is opened by any person other than the authorized technicians. The user should consult his/her dealer for the problem happening. Warranty voids if the user does not follow the instructions in application of this merchandise. The manufacturer is by no means responsible for any damage or hazard caused by improper application.

LIMITES DE GARANTIE

La garantie prend fin automatiquement lorsque la machine est ouverte par une personne autre que les techniciens autorisés. L'utilisateur doit consulter son revendeur pour le problème qui se produit. La garantie s'annule si l'utilisateur ne suit pas les instructions d'application de cette marchandise. Le fabricant n'est en aucun cas responsable de tout dommage ou danger causé par une mauvaise application.

警告使用者

此為甲類資訊技術設備，於居住環境中使用時，可能會造成射頻擾動，在此

種情況下，使用者會被要求採取某些適當的對策。

SAFETY INSTRUCTIONS

This equipment is not suitable for use in locations where children are likely to be present.

CONSIGNES DE SÉCURITÉ

Cet équipement ne convient pas à une utilisation dans des lieux pouvant accueillir des enfants.

BATTERY CAUTION NOTES

- Dispose of used batteries according to the instructions.
- Replacement of a battery with an incorrect type that can defeat a safeguard (for example, in the case of some lithium battery types)
- Disposal of a battery into fire or a hot oven, or mechanically crushing or cutting of a battery that can result in an explosion.
- Leaving a battery in an extremely high temperature surrounding environment that can result in an explosion or the leakage of flammable liquid or gas.
- A battery subjected to extremely low air pressure that may result in an explosion or the leakage of flammable liquid or gas.

BATTERIE ATTENTION NOTES

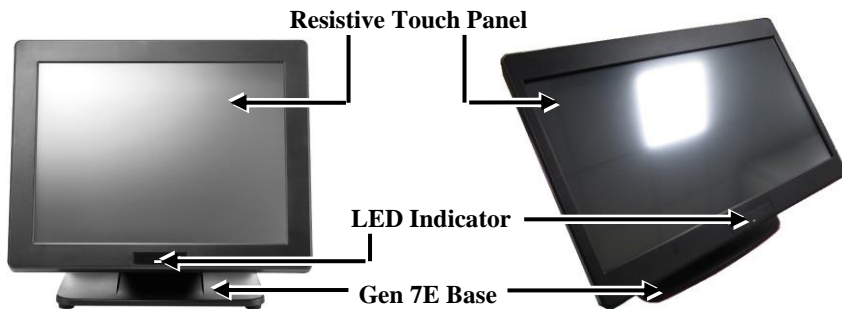
- Jetez les piles usagées conformément aux instructions.
- Remplacement d'une batterie avec un type incorrect qui peut annuler une sauvegarde (par exemple, dans le cas de certains types de batterie au lithium)
- Mise au rebut d'une batterie dans le feu ou dans un four chaud, ou écrasement ou coupure mécanique d'une batterie pouvant entraîner une explosion.
- Laisser une batterie dans un environnement environnant à des températures extrêmement élevées pouvant entraîner une explosion ou la fuite de liquide ou de gaz inflammable.
- Une batterie soumise à une pression atmosphérique extrêmement basse pouvant provoquer une explosion ou une fuite de liquide ou de gaz inflammable.

警告

本電池如果更換不正確會有爆炸的危險，請依製造商說明書處理用過之電池。

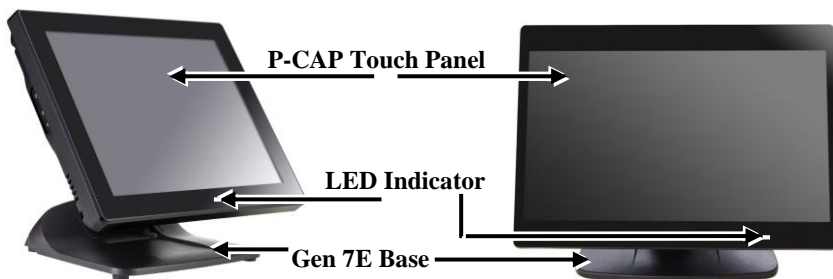
Overviews of the PS-3515/3516/3615/3616

Front View



PS-3515

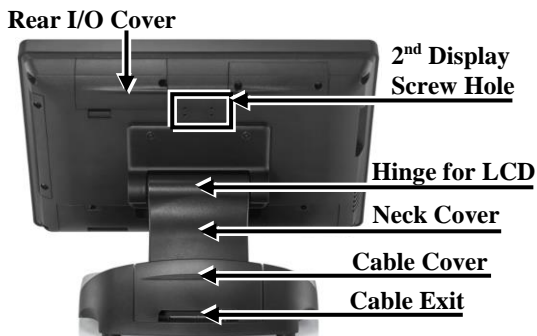
PS-3516



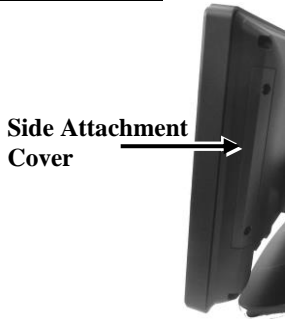
PS-3615

PS-3616

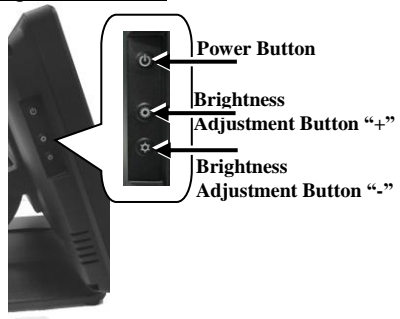
Rear View



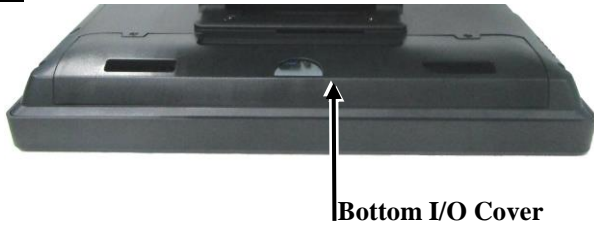
Left Side View



Right Side View

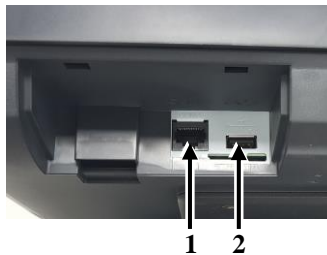


Bottom View



View of I/O Interface

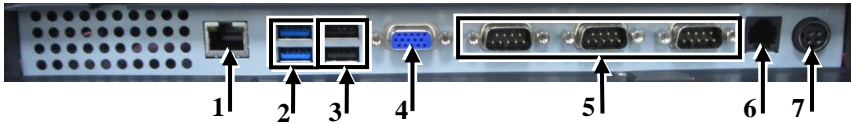
Top I/O Ports



- 1 COM4 Port
- 2 USB 2.0 Port

※ The top I/O ports are provided for COM-based and USB-based peripheral devices, for example, customer display.

Bottom I/O Ports



- | | | | |
|---|---------------------------|---|-----------------------|
| 1 | RJ45 LAN Port | 2 | USB 2.0 Ports |
| 3 | USB 3.0 Ports | 4 | VGA Port |
| 5 | COM Port (COM1/COM2/COM3) | 6 | RJ11 Cash Drawer Port |
| 7 | 12VDC-IN Power Jack | - | - |

Terminal from shipping mode to operation mode

In consideration of proper packaging, before shipping, the terminal is folded, staying in shipping mode. Thus, when receiving the product, you will find that the terminal is well folded, as shown below.

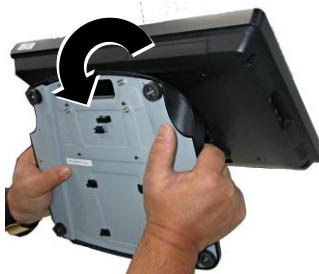


Before operating this terminal, unfold it and make this terminal rise in operation mode by referring to the following steps. Here, an equivalent model with GEN 7 base is taken below for example.

1. Firstly, lift this terminal gently to make it to be unfolded.



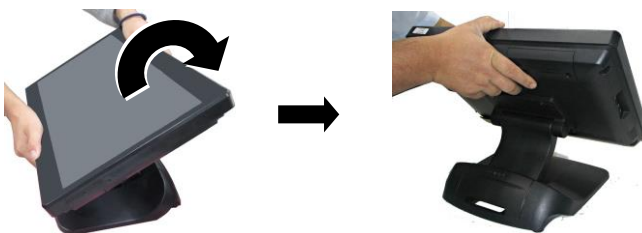
2. Overturn this terminal in the direction as indicated by the arrow in the right figure.



3. Place this terminal on a flat table.



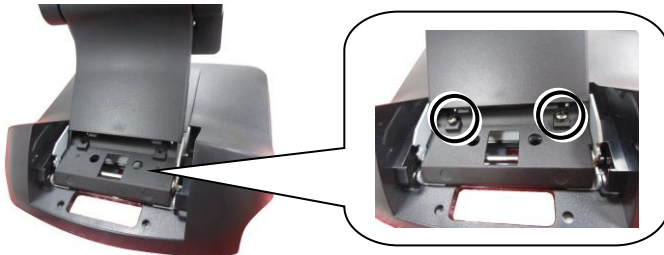
4. Tilt this terminal to a degree in the direction as indicated by the arrow below.



5. Remove the cable cover from the base.



6. Fix the base with two #/6/32-14L screws.



7. Push the cable cover back to the base.



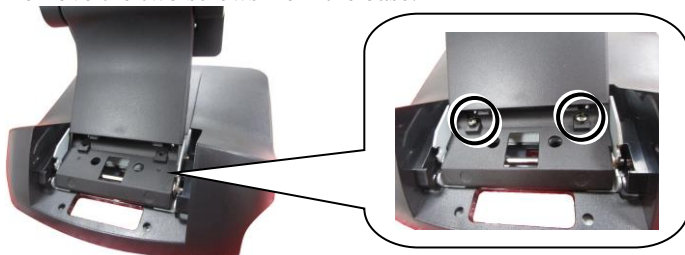
Terminal from operation mode to shipping mode

To fold this terminal, refer to the following steps. Here, an equivalent model with GEN 7 base is taken below for example.

1. Remove the cable cover.



2. Remove the two screws from the base.



3. Carefully hold the lower rim of the display.



4. Push the base-folding lever in the direction as indicated by the arrow below (1). Then, the display will be loosen and go down (2).



5. When the display goes down to a degree, loose the base-folding lever, as shown in the direction as indicated by the arrow below.



6. Then, gently tilt the display in the direction as indicated by the arrow below until the display is well folded.



7. Put back the cable cover.



Installing Optional Upgrade Kits and Peripherals

PS-3515/3516/3615/3616 can work with multiple optional upgrade kits and peripheral devices, such as magnetic stripe reader (MSR), LCD monitor, cash drawer and the like.

Before installing an optional upgrade kit and/or peripheral device, make sure that the system is powered off and the external power source is removed from the POS box to prevent electric hazard! Failure to follow the warning description will void the product warranty!

For the detailed instruction, refer to each of the user manuals of the optional upgrade kits and peripheral devices.

Connecting Power Adapter and I/O Cables

Before connecting power adapter and I/O cables to the I/O ports of PS series terminal, please route and arranging the cables. Refer to the following step-by-step instruction of cable routing and arrangement for the details. Here, an equivalent model with GEN 7 base is taken below for example.

1. Press the circled section of the cable cover with your thumb.



2. Pull out the cable cover.



3. Push and tilt the terminal to the end in the direction as shown by the arrow. Then determine that the terminal is tilted to the end, as shown in the right figure.



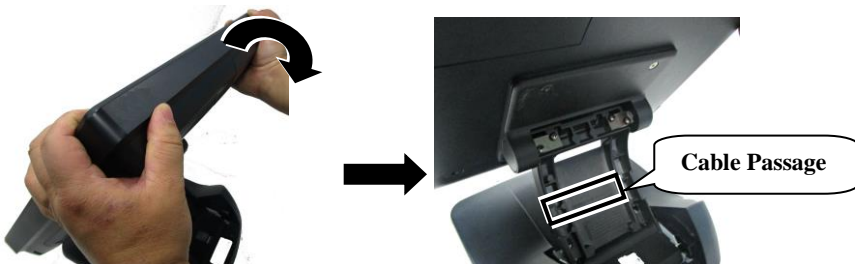
4. Press the circled section with two thumbs and pull by force the two sides of the locking hook with two forefingers as indicated by the arrow.



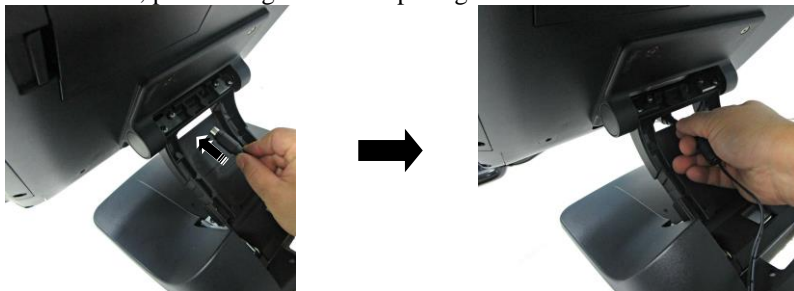
5. Remove the neck cover from the base stand.



6. Tilt the terminal slightly at a little angle in the direction as shown by the arrow, making cables easily pass through the cable passage.



7. Make the connector, which will be connected to the I/O port of the terminal, pass through the cable passage of base stand.



8. Push and tilt the terminal to the end in the direction as shown by the arrow.



9. Remove the bottom I/O cover with your forefinger inserting the middle hole of the cover.



10. Connect the connector of the power adapter to the 12VDC-IN power jack.



11. Cover the bottom I/O interface and gather the I/O cables to the circled cable arrangement area, as shown below.



12. Push and tilt the terminal to the end in the direction as shown by the arrow.



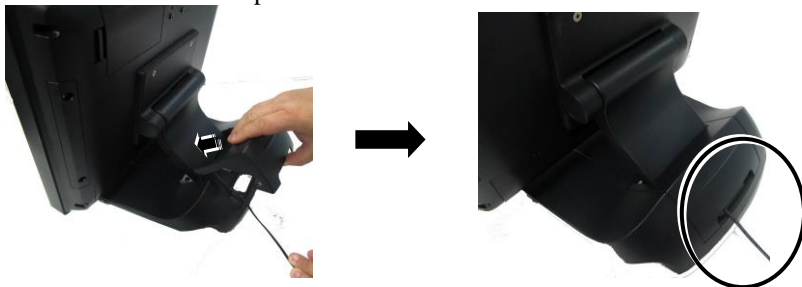
13. Arrange well the I/O cable located at the area of neck cover.



14. Shield the I/O cable arrangement area on the neck of the base stand with the neck cover.



15. Shield the I/O cable exposure area with the cable cover.



CAUTION: On doing insertion or extraction of a cable connector, please always hold the connector head itself instead of pulling the cable wire. Doing this could damage the cables and ports, which is considered as an artificial damage and is not covered by the warranty. The means of power cord should be connected to a socket-outlet with earthing connection.

ATTENTION: Lors de l'insertion ou de l'extraction d'un connecteur de câble, veuillez toujours tenir la tête du connecteur elle-même au lieu de tirer le fil du câble. Cela pourrait endommager les câbles, ce qui est considéré comme un dommage artificiel et n'est pas couvert par la garantie. Le cordon d'alimentation doit être connecté à une prise de courant avec mise à la terre.

Powering ON the PS-3515/3516/3615/3616

After connecting the power cable to the power jack of the terminal, press the power button to power on the terminal. To power it off, press the power button again.

Once powering off the system, if you want to power it on again, please wait at least 3 seconds.



If the system hangs due to a reason, such as software resource conflict, please press and hold the power button for over 10 seconds to forcibly shut down the system.

Power LED Indicator

LED status indicator is mainly responsible for notifying users of the current system status by emitting various LED signals. The table provided below shows all the possible LED status as a quick reference.

LED	Status	Description
POWER	Solid blue	System power ON
	Solid orange	System standby

Installing an Operating System

This product is highly professional equipment. Therefore, we do NOT encourage you to install any operating system into this machine without professional assistance. We shall not be responsible for any technical support to questions on this aspect. We suggest that you contact your dealer for OS installation.

Operating System Recovery

For the PS-3515/3516/3615/3616 main system preloaded with an operating system on HDD or SSD, We provide a recovery DVD shipped with the main system for the preloaded operating system. The system integrator shall take care of software restoration after the OS is recovered.

If you plan to recover your operating system, we do NOT encourage you to recover any operating system. Please contact your service center for operating system recovery.

Operation Environment

This terminal must NOT be operated in an environment with restricted ventilation. There must be at least 25 mm air clearance around any top or side ventilation holes with free flow of air around the unit at all times for system operation.

Specifications

Model		PS-3515/3516/3615/3616
System Configuration	Processor	Intel Apollo Lake N3350/J3455
	System Memory	SO-DIMM x 1, DDR3L
	Storage Device	1 x M.2 port (M.2 2280 / B+M key) (M.2 support s SATA interface signal only)
	Power Supply	12V/40W
	OS support	Windows 10 IoT
Display & Touch	LCD	PS-3515/3615: 15" (1024x768) with LED backlight PS-3516/3616: 15.6" (1366x768) with LED backlight
	Touch	PS-3515/3516: Resistive Touch PS-3615/3616: P-CAP Touch

I/O & Expansion	Serial Port	4, 3 x DB9 on bottom I/O plate + 1 x RJ50 on top I/O plate, 5V/12V support on all COM ports
	Standard USB Port	5, 2 x USB3.0 + 2 x USB2.0 on bottom I/O plate + 1 x USB2.0 on top I/O plate
	Internal USB Port	2 x USB 2.0
	Powered USB Port	Via PU490 in GEN8 base
	LAN Port	10 / 100 / 1000 Mb x 1
	Display Port	VGA x 1, 12V support
	CR Port	1, control 2 CR
	Audio	Buzzer + 1 x internal 2W speaker (optional)
	Expansion Slot	1 x M.2 (M.2 2230 / E Key)
Environmental	Operating Condition	0°C - 40°C, 20%RH - 90%RH
	Storage Condition	-20°C - 70°C, 10%RH - 90%RH

✳ The product information and specifications are subject to change without prior notice. To get the detailed information on the PS-3515/3516/3615/3616, please contact your dealer or the service team.